

Morgan Livestock Equipment

Bowie • Teague • West • Fredericksburg
800-720-6018

2023-2024 Weight Break Book

Texas State Fair ♦ Fort Worth ♦ San Antonio ♦ San Angelo ♦ Houston ♦ Austin ♦
San Antonio ♦ San Angelo ♦ Houston ♦ Austin ♦ Rio Grande Valley ♦ State Fair ♦
Houston ♦ Austin ♦ Rio Grande Valley ♦ Texas State Fair ♦ Fort Worth ♦ San Antonio ♦
Rio Grande Valley ♦ Texas State Fair ♦ Fort Worth ♦ San Antonio ♦ San Angelo ♦ Houston ♦
Fort Worth ♦ San Antonio ♦ San Angelo ♦ Houston ♦ Austin ♦ Rio Grande Valley ♦
San Antonio ♦ San Angelo ♦ Houston ♦ Austin ♦ Rio Grande Valley ♦ State Fair ♦ Fort
Worth ♦ Austin ♦ Rio Grande Valley ♦ State Fair ♦ Fort Worth ♦ San Antonio ♦ Sa
n Antonio ♦ State Fair ♦ Fort Worth ♦ San Antonio ♦ San Angelo ♦ Houston ♦ Austin ♦
Fort Worth ♦ San Antonio ♦ San Angelo ♦ Houston ♦ Austin ♦ Rio Grande Valley ♦ Te
xas State Fair ♦ San Angelo ♦ Houston ♦ Austin ♦ Rio Grande Valley ♦ Texas State Fair ♦ Fort W
orth ♦ Austin ♦ Rio Grande Valley ♦ Texas State Fair ♦ Fort Worth ♦ San Antonio ♦ Sa
n Antonio ♦ State Fair ♦ Fort Worth ♦ San Antonio ♦ San Angelo ♦ Houston ♦ Austin ♦
Fort Worth ♦ San Antonio ♦ San Angelo ♦ Houston ♦ Austin ♦ Rio Grande Valley ♦ Te
xas State Fair ♦ San Angelo ♦ Houston ♦ Austin ♦ Rio Grande Valley ♦ Texas State Fair ♦ Fort
Worth ♦ Austin ♦ Rio Grande Valley ♦ State Fair ♦ Fort Worth ♦ San Antonio ♦ San An

Morgan Livestock Equipment

www.morganlivestockequipment.com

800-720-6018

CALL FOR SCALE SPECIALS



TALK TO THE EXPERTS!
800-720-6018



Rusty Morgan
Bowie, TX
940-841-1802



Scott Holmes
Teague, TX
903-388-2118



Hadley Morgan
West, TX
940-531-8934



Grant Holmes
Teague, TX
903-644-8866



Destry Morgan
Fredericksburg, TX
830-998-8955



Todd Elbel
New Braunfels, TX
800-720-6018



Lacho Garza
Rio Grande Valley
956-330-0351



Wade Shackelford
Gunter, TX
972-679-4749



STATE FAIR OF TEXAS®

SEPTEMBER 27, 2024 - OCTOBER 20, 2024



Brandon Callis
Oklahoma



Scott Greiner
Virginia



Kyle Smithwick
Texas



Galen McCune
Oklahoma



STATE FAIR - STEERS

		2022	2023
DIVISION	CLASS	WEIGHTS	
BRITISH LT WT	CL1	1083-1199	1000-1155
	CL2	1220-1263	1156-1251
HVY WT	CL1	1289-1349	1252-1325
	CL2	1361-1493	1326-1488
AMERICAN LT WT	CL1	1117-1199	1000-1180
	CL2	1218-1290	1181-1269
HVY WT	CL1	1333-1429	1270-1383
	CL2	1433-1615	1384-1665
AOB LT WT	CL1	1015-1095	1000-1095
	CL2	1115-1193	1096-1179
	CL3	1196-1239	1180-1234
	CL4	1240-1258	1235-1269
HVY WT	CL1	1278-1304	1270-1335
	CL2	1307-1339	1336-1379
	CL3	1342-1399	1380-1441
	CL4	1424-1499	1442-1750
BLACK/RED X LT WT	CL1	1045-1233	1000-1173
	CL2	1245-1279	1174-1269
HVY WT	CL1	1285-1373	1270-1339
	CL2	1395-1574	1340-1524
PROSPECT STEERS			
ABC	CL1	500-590	711-819
	CL2	654-672	829-899
	CL3	748-875	917-966
	CL4	948-1031	1005-1100
ANGUS	CL1	858-900	620-755
	CL2	953-953	920-1007
	CL3	1013-1098	N/A
HEREFORD	CL1	845-910	700-823
	CL2	940-977	869-995
	CL3	1052-1090	1030-1100



STATE FAIR - STEERS (Cont.)

		2022	2023
DIVISION	CLASS	WEIGHTS	
SHORTHORN	CL1	764-833	770-829
	CL2	906-1100	889-980
	CL3	N/A	1019-1100
BLACK X	CL1	725-925	562-770
	CL2	935-995	782-868
	CL3	1100-1100	879-967
	CL4	N/A	1020-1100
RED X	CL1	700-815	650-759
	CL2	829-915	788-847
	CL3	959-999	863-952
	CL4	1024-1100	1050-1100
OTHER X	CL1	540-741	629-735
	CL2	758-798	750-803
	CL3	808-880	813-849
	CL4	894-975	870-875
	CL5	1024-1100	880-906
	CL6	N/A	912-940
	CL7	N/A	949-995
	CL8	N/A	1035-1100



STATE FAIR - GOATS

		2022	2023
DIVISION	CLASS	WEIGHTS	
GOATS	CL1	50-54	50-63
	CL2	55-59	64-70
	CL3	60-64	71-75
	CL4	65-69	76-79
	CL5	70-74	80-85
	CL6	75-78	86-90
	CL7	79-88	91-95
	CL8	89-109	96-102
	CL9	106-120	103-120
WETHER DOE	CL1	50-54	50-59
	CL2	55-59	60-68
	CL3	60-64	69-77
	CL4	65-69	78-84
	CL5	70-74	85-90
	CL6	75-78	91-104
	CL7	79-88	105-163
	CL8	89-109	N/A



STATE FAIR - SWINE

		2022	2023
DIVISION	CLASS	WEIGHTS	
LIGHT OPB	CL1	250-268	250-275
	CL2	270-300	276-300
DARK OPB	CL1	250-250	250-250
	CL2	254-275	251-273
	CL3	276-300	274-300
DUROC	CL1	250-250	250-260
	CL2	253-272	261-279
	CL3	273-284	280-296
	CL4	285-300	300-300
YORKSHIRE	CL1	250-270	250-270
	CL2	271-282	271-294
	CL3	285-300	295-300
DARK X	CL1	250-250	250-250
	CL2	251-264	252-264
	CL3	265-274	266-275
	CL4	276-288	277-290
	CL5	289-300	291-300
OTHER X	CL1	250-250	250-250
	CL2	250-250	250-250
	CL3	250-250	251-258
	CL4	251-262	259-264
	CL5	263-269	265-269
	CL6	270-277	270-277
	CL7	278-289	278-294
	CL8	290-300	295-300
HAMPSHIRE	CL1	250-250	250-250
	CL2	252-263	251-266
	CL3	264-275	267-280
	CL4	276-300	281-300
BERKSHIRE	CL1	250-255	250-266
	CL2	261-300	270-300
X GILTS	CL1	214-245	202-255
	CL2	248-260	257-275
	CL3	262-270	276-299
	CL4	271-280	300-321
	CL5	281-289	322-360
	CL6	290-304	N/A
	CL7	305-315	N/A
	CL8	316-334	N/A
	CL9	339-350	N/A



GRIP IT
and
RIP IT

P
Parr
Livestock

1226 CR 699 • FARMERSVILLE, TX 75442

Luke Parr • 972-740-2048 // Jake Parr • 214-578-1355 // Gary Parr • 972-740-2052

FORT WORTH STOCK SHOW & RODEO

JANUARY 17, 2025 - FEBRUARY 8, 2025



Mark Hoge
Illinois



Brad Dale
Iowa



Brent Jennings
North Carolina



Austin Thompson
Indiana



FORT WORTH - STEERS

		2023	2024
DIVISION	CLASS	WEIGHTS	
ANGUS	CL1	1000-1130	1000-1185
	CL2	1131-1235	1186-1285
	CL3	1236-1497	1286-1550
HEREFORD	CL1	1000-1157	1000-1147
	CL2	1158-1244	1148-1240
	CL3	1245-1555	1241-1548
POLLED HEREFORD	CL1	1000-1175	1000-1145
	CL2	1176-1250	1146-1323
	CL3	1251-1585	1324-1585
SHORTHORN	CL1	1000-1125	1000-1121
	CL2	1126-1250	1122-1239
	CL3	1251-1564	1240-1549
ABC	CL1	1000-1097	1000-1094
	CL2	1098-1280	1095-1265
	CL3	1281-1600	1266-1554
EUROPEAN CROSS	CL1	1000-1000	1000-1000
	CL2	1001-1048	1001-1039
	CL3	1049-1076	1040-1074
	CL4	1077-1110	1075-1118
	CL5	111-1142	1119-1141
	CL6	1143-1177	1142-1174
	CL7	1178-1202	1175-1200
	CL8	1203-1238	1201-1241
	CL9	1239-1285	1242-1283
	CL10	1286-1339	1284-1350
	CL11	1340-1470	1351-1490
	CL12	1471-1650	1491-1740



NOTES

			DATE / WEIGHT				
EXHIBITOR	BREED	TAG #					



FORT WORTH - SHEEP

		2023	2024
DIVISION	CLASS	WEIGHTS	
FW	CL1	113-130	96-128
	CL2	132-138	129-144
	CL3	139-175	145-174
FW X	CL1	110-133	100-135
	CL2	135-144	137-148
	CL3	145-175	149-190
SOUTH DOWN	CL1	92-118	94-118
	CL2	119-131	119-133
	CL3	132-160	134-170
DORPER	CL1	87-110	82-111
	CL2	112-123	112-124
	CL3	124-167	125-148
MW	CL1	90-123	91-128
	CL2	124-134	129-138
	CL3	135-142	139-145
	CL4	143-149	146-153
	CL5	150-159	154-164
	CL6	160-199	165-194



FORT WORTH - GOATS

		2023	2024
DIVISION	CLASS	WEIGHTS	
GOATS	CL1	50-66	50-67
	CL2	67-73	68-73
	CL3	74-77	74-77
	CL4	78-81	78-81
	CL5	82-84	82-85
	CL6	85-87	86-89
	CL7	88-90	90-93
	CL8	91-94	94-97
	CL9	95-98	98-100
	CL10	99-103	101-104
	CL11	104-110	105-111
	CL12	111-137	112-142



SUPREME
TRAILER SALES

***Cimarron Trailers Dealers
for Texas & Oklahoma***

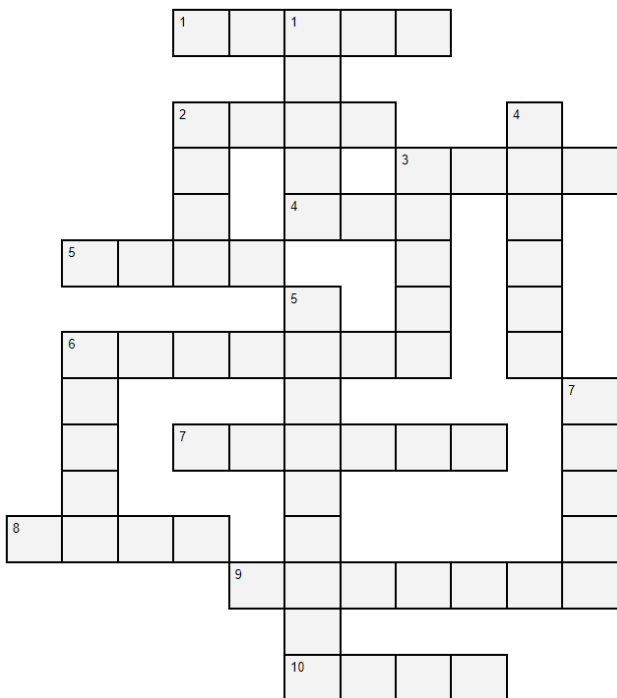


Call us at (940) 872-3093

We look forward to serving you!

Rusty's Stock Show Stumper

Crossword Puzzle



ACROSS: 1. First name of owner of Morgan Livestock Equipment 2. Event where ribbons meet rodeo 3. Where livestock get their water 4. She's a woolly wonder in the show ring 5. Young cow making its show debut 6. Hopping fluffballs 7. Castrated bulls 8. What keeps a sheep warm and a judge impressed 9. The Texas city where the largest rodeo in the world takes place 10. Young goats or fairground youth. **DOWN:** 1. Porky show ring contenders 2. Young horse or related animal 3. State where even the cattle have swagger 4. Living things that can move, eat, and react to their environment using their senses 5. Farm animals that are raised for food or work 6. Cowboys and cowgirls showcase their skills 7. Often confused with buffalo

The answer key can be found online at:
<https://morganlivestockequip.com/crosswords>

San Antonio Stock Show & Rodeo™

FEBRUARY 6, 2025 - FEBRUARY 23, 2025



MAIN JUDGE

Blake Nelson

Missouri

ASSOCIATE JUDGE

Spencer Scotten

Missouri



Will Hilty

Pennsylvania

Ben Bobell

Illinois



Eric Zimmerman

Texas



Dan Willoughby

Indiana



SAN ANTONIO - STEERS

		2023	2024
DIVISION	CLASS	WEIGHTS	
ANGUS	CL1	1000-1197	1000-1198
	CL2	1198-1329	1199-1315
	CL3	1330-1500	1316-1500
BRAHMAN	CL1	1000-1184	1000-1190
	CL2	1185-1291	1191-1299
	CL3	1292-1500	1300-1500
CHAROLAIS	CL1	1000-1190	1000-1190
	CL2	1191-1298	1191-1295
	CL3	1299-1500	1296-1500
HEREFORD	CL1	1000-1229	1000-1228
	CL2	1230-1295	1229-1290
	CL3	1296-1500	1291-1500
POLLED HEREFORD	CL1	1000-1229	1000-1209
	CL2	1230-1295	1210-1336
	CL3	1296-1500	1337-1500
LIMOUSIN	CL1	1000-1205	1000-1205
	CL2	1206-1309	1206-1381
	CL3	1310-1500	1382-1500
MAINE-ANJOU	CL1	1000-1219	1000-1203
	CL2	1220-1331	1204-1329
	CL3	1332-1500	1330-1500
RED ANGUS	CL1	1000-1210	1000-1209
	CL2	1211-1500	1210-1500
SANTA- GERTRUDIS	CL1	1000-1209	1000-1200
	CL2	1210-1340	1201-1299
	CL3	1341-1500	1300-1500
SHORTHORN	CL1	1000-1183	1000-1169
	CL2	1184-1291	1170-1284
	CL3	1292-1500	1285-1500
SIMBRAH	CL1	1000-1190	1000-1187
	CL2	1191-1299	1188-1298
	CL3	1300-1500	1299-1500
SIMMENTAL	CL1	1000-1249	1000-1215
	CL2	1250-1351	1216-1339
	CL3	1352-1500	1340-1500



SAN ANTONIO - SWINE

		2023	2024
DIVISION	CLASS	WEIGHTS	
CHESTER	CL1	250-265	250-264
	CL2	268-283	265-282
	CL3	284-300	283-300
POLAND	CL1	250-268	250-266
	CL2	269-300	267-300
DUROC	CL1	250-253	250-250
	CL2	250-253	252-261
	CL3	254-264	262-268
	CL4	265-272	269-274
	CL5	273-278	275-282
	CL6	279-286	283-289
	CL7	287-296	290-296
	CL8	297-300	297-300
	CL9	297-300	297-300
SPOT	CL1	250-252	250-250
	CL2	250-253	251-262
	CL3	255-265	263-272
	CL4	266-279	273-282
	CL5	280-300	283-300
HAMPSHIRE	CL1	250-250	250-250
	CL2	250-250	250-250
	CL3	251-257	253-258
	CL4	258-263	259-266
	CL5	264-268	267-273
	CL6	269-275	274-279
	CL7	276-283	280-287
	CL8	284-290	288-299
	CL9	291-300	300-300
DARK X	CL1	250-253	250-253
	CL2	250-253	250-253
	CL3	250-252	254-262
	CL4	254-259	263-266
	CL5	260-265	267-272
	CL6	266-272	273-279
	CL7	273-279	280-286
	CL8	280-287	287-298
	CL9	288-300	299-300

**SAN ANTONIO - SWINE (Cont.)**

		2023	2024
DIVISION	CLASS	WEIGHTS	
OTHER X	CL1	250-253	250-252
	CL2	250-253	250-252
	CL3	250-253	250-252
	CL4	250-253	253-258
	CL5	254-257	259-263
	CL6	258-260	264-267
	CL7	261-265	268-272
	CL8	266-268	273-275
	CL9	269-271	276-278
	CL10	272-275	279-282
	CL11	276-278	283-285
	CL12	279-282	286-288
	CL13	283-286	289-292
	CL14	287-290	293-297
	CL15	291-298	298-300
	CL16	300-300	298-300
BERKSHIRE	CL1	250-250	250-250
	CL2	251-269	251-275
	CL3	270-300	276-300
LANDRACE	CL1	250-275	250-274
	CL2	283-300	275-300
YORKSHIRE	CL1	250-250	250-255
	CL2	252-267	256-267
	CL3	268-277	268-277
	CL4	278-283	278-286
	CL5	284-296	287-297
	CL6	297-300	298-300
X GILTS	CL1	230-232	200-206
	CL2	230-232	207-222
	CL3	230-232	223-230
	CL4	233-239	231-238
	CL5	240-243	239-244
	CL6	244-250	245-250
	CL7	251-256	251-256
	CL8	257-261	257-264
	CL9	262-268	265-271
	CL10	269-274	272-278
	CL11	275-283	279-285
	CL12	284-293	286-293
	CL13	294-302	294-301
	CL14	303-318	302-313
	CL15	319-340	314-350



SAN ANTONIO - SHEEP

		2023	2024
DIVISION	CLASS	WEIGHTS	
SOUTH DOWN	CL1	100-120	100-116
	CL2	121-126	117-126
	CL3	127-139	127-137
	CL4	140-170	138-175
FW	CL1	100-127	100-124
	CL2	128-134	125-133
	CL3	135-138	134-138
	CL4	139-145	139-147
	CL5	146-173	148-175
FW X	CL1	100-125	100-128
	CL2	126-133	129-135
	CL3	134-140	136-143
	CL4	141-145	144-150
	CL5	146-153	151-160
	CL6	154-175	161-175
MW	CL1	100-119	100-118
	CL2	120-128	119-126
	CL3	129-133	127-132
	CL4	134-136	133-136
	CL5	137-140	137-140
	CL6	141-143	141-144
	CL7	144-146	145-147
	CL8	147-149	148-149
	CL9	150-152	150-152
	CL10	153-155	153-154
	CL11	156-157	155-156
	CL12	158-160	157-159
	CL13	161-163	160-162
	CL14	164-167	163-166
	CL15	168-172	167-171
	CL16	173-175	172-175
DORPER	CL1	100-111	100-110
	CL2	112-123	111-122
	CL3	124-140	123-140
WETHER DAM EWE LAMBS	CL1	99-122	94-120
	CL2	123-130	121-130
	CL3	131-134	131-137
	CL4	135-140	138-142
	CL5	141-146	143-149
	CL6	147-153	150-159
	CL7	154-162	160-196
	CL8	163-190	N/A



EQUINE
LIVESTOCK
RABBITS AND CAVIES
BUCKING BULLS

BRIAN LOWE
(214) 906-7155



SAN ANGELO

Stock Show & Rodeo Association

FEBRUARY 1, 2024 - FEBRUARY 16, 2024



Brent Murphy
Missouri



Miles Gibbs
Texas



Shannon Scotten
Missouri



Mark Hoge
Illinois



SAN ANGELO - STEERS

		2023	2024
DIVISION	CLASS	WEIGHTS	
AMERICAN CROSS	CL1	1000-1144	1025-1133
	CL2	1170-1309	1134-1269
	CL3	1313-1555	1270-1554
BRITISH	CL1	1005-1195	1050-1179
	CL2	1207-1290	1180-1328
	CL3	1375-1499	1329-1600
BLACK EUROPEAN CROSS	CL1	1000-1143	1015-1252
	CL2	1147-1310	1253-1418
	CL3	1333-1597	1419-1699
OTHER EUROPEAN CROSS	CL1	1000-1116	1000-1107
	CL2	1126-1239	1108-1231
	CL3	1241-1339	1232-1362
	CL4	1369-1499	1363-1720



SAN ANGELO - SHEEP

		2023	2024
DIVISION	CLASS	WEIGHTS	
FW	CL1	100-126	105-124
	CL2	127-133	125-132
	CL3	134-143	133-141
	CL4	144-170	142-170
FW X	CL1	100-128	109-130
	CL2	129-137	131-136
	CL3	138-144	137-143
	CL4	145-154	144-151
	CL5	155-170	152-170
SOUTH DOWN	CL1	92-119	100-120
	CL2	120-129	121-130
	CL3	130-168	131-168
DORPER	CL1	90-117	92-114
	CL2	118-150	115-156
MW	CL1	100-132	100-132
	CL2	133-141	133-145
	CL3	142-149	146-151
	CL4	150-159	152-160
	CL5	160-170	161-170

Morgan **L**ivestock **E**quipment

Morgan Livestock Equipment has a long history of working with local FFA and 4-H clubs across the United States from grade school to college. From delivery to set-up and service long after a sale, we will provide your school with the best service in the industry so your kids can take care of all species, including cattle, sheep, hog, poultry and rabbits. Adding small species pens, like poultry and rabbits, allow for more students to participate – more projects, and more opportunity.



AWARDED VENDOR

In addition, Morgan Livestock Equipment is an “Awarded Vendor” member of TIPS (The Interlocal Purchasing System) which allows you to save valuable time and money by not having to send out for competitive bids on each project.

Let the experts at Morgan Livestock Equipment help you design a facility to maximize your opportunities. Here are just some examples of work we have been doing all over Texas for your school



SAN ANGELO - SWINE

		2023	2024
DIVISION	CLASS	WEIGHTS	
DARK OPB	CL1	250-250	250-251
	CL2	253-267	252-271
	CL3	270-290	272-290
WHITE X	CL1	250-267	250-254
	CL2	250-267	255-264
	CL3	268-284	265-280
	CL4	285-290	281-290
DUROC	CL1	250-260	250-260
	CL2	261-274	261-278
	CL3	275-289	279-289
	CL4	290-290	290-290
HAMPSHIRE	CL1	250-250	250-250
	CL2	252-264	251-268
	CL3	265-279	269-284
	CL4	280-290	285-290
LIGHT OPB	CL1	250-266	250-277
	CL2	267-290	278-290
YORK	CL1	250-269	250-263
	CL2	270-285	264-284
	CL3	287-290	285-290
BERKSHIRE	CL1	250-261	250-260
	CL2	262-290	261-290
OTHER X	CL1	250-255	250-256
	CL2	250-255	250-256
	CL3	256-266	257-267
	CL4	267-275	268-277
	CL5	276-286	278-289
	CL6	287-290	290-290
JUNIOR BREEDING GILTS			
BERKSHIRE	CL1	124-228	164-231
	CL2	230-250	232-249
	CL3	251-270	250-266
	CL4	271-292	267-288
	CL5	293-350	289-340



SAN ANGELO - SWINE (Cont.)

		2023	2024
DIVISION	CLASS	WEIGHTS	
JUNIOR BREEDING GILTS (Cont.)			
DARK OPB	CL1	159-246	142-240
	CL2	247-275	241-273
	CL3	279-340	274-350
DUROC	CL1	160-213	165-227
	CL2	220-238	228-246
	CL3	239-254	247-256
	CL4	255-266	257-268
	CL5	267-276	269-276
	CL6	277-290	277-288
	CL7	291-300	289-304
	CL8	302-318	305-324
	CL9	320-360	325-353
HAMPSHIRE	CL1	171-240	176-264
	CL2	242-273	265-295
	CL3	274-355	296-350
LIGHT OPB	CL1	113-235	173-242
	CL2	237-262	243-278
	CL3	263-280	279-347
	CL4	282-300	N/A
	CL5	305-426	N/A
SPOT	CL1	157-212	116-229
	CL2	213-235	230-248
	CL3	237-246	249-265
	CL4	247-259	266-285
	CL5	260-280	286-340
	CL6	281-328	N/A
YORKSHIRE	CL1	193-263	155-251
	CL2	265-296	252-293
	CL3	300-360	294-348
JUNIOR STARS GILT SHOW			
WHITE CROSS	CL1	230-230	230-234
	CL2	231-245	235-253
	CL3	246-258	254-267
	CL4	260-272	268-280
	CL5	274-288	281-300
	CL6	289-336	301-379



SAN ANGELO - SWINE (Cont.)

		2023	2024
DIVISION	CLASS	WEIGHTS	
JUNIOR STARS GILT SHOW (Cont.)			
OTHER CROSS	CL1	230-230	230-233
	CL2	230-230	230-233
	CL3	230-230	234-243
	CL4	231-238	244-249
	CL5	239-246	250-255
	CL6	267-254	256-261
	CL7	255-261	262-269
	CL8	262-270	270-275
	CL9	271-280	276-284
	CL10	281-290	285-293
	CL11	292-304	294-308
	CL12	305-375	309-365
BERKSHIRE	CL1	N/A	164-235
	CL2	N/A	236-264
	CL3	N/A	265-288
	CL4	N/A	289-340
CHESTER WHITE	CL1	N/A	173-252
	CL2	N/A	253-284
	CL3	N/A	285-332
DUROC	CL1	N/A	165-242
	CL2	N/A	243-258
	CL3	N/A	259-272
	CL4	N/A	273-289
	CL5	N/A	290-314
	CL6	N/A	315-385
HAMPSHIRE	CL1	N/A	208-283
	CL2	N/A	284-350
POLAND	CL1	N/A	192-259
	CL2	N/A	260-333
SPOT	CL1	N/A	174-248
	CL2	N/A	249-279
	CL3	N/A	280-345
YORKSHIRE	CL1	N/A	155-250
	CL2	N/A	251-293
	CL3	N/A	294-348



Livestockjudging.com



**WHEN HEALTH AND
PERFORMANCE
MATTER!**

David Bray

Agriculture/Livestock Consultant

325.933.0293

david@omnicrobe.com

www.omnicrobe.com



SOIL²

BIOLOGY | YIELD | SAVINGS

- Increase Profits
- Reduce Synthetic Inputs
- Support Soil Health
- Increase Nutrient Cycling



MICROBIOTA+

HEALTH | NUTRITION | SAVINGS

- Increase Profits
- Keep Livestock on Feed
- Support Digestive System
- Vet Recommended



Shelf
Stable



No
Odor



Keep out of
Direct Sunlight



Store Within
35F-125F



HOUSTON® Livestock
Show *and* Rodeo

MARCH 4, 2025 - MARCH 23, 2025



Jack Ward
Missouri



Jason Simpson
Colorado



Chad Coburn
Texas



Maverick Squires
Oklahoma

Ty Engel
Illinois



HOUSTON - STEERS

		2023	2024
DIVISION	CLASS	WEIGHTS	
ANGUS	CL1	1047-1207	1000-1184
	CL2	1228-1342	1185-1300
	CL3	1343-1477	1301-1695
BRAHMAN X	CL1	1000-1189	1000-1205
	CL2	1190-1289	1206-1294
	CL3	1290-1471	1295-1745
BRANGUS	CL1	1000-1219	1000-1210
	CL2	1220-1310	1211-1320
	CL3	1311-1581	1321-1548
RED ANGUS	CL1	1041-1143	1000-1141
	CL2	1144-1258	1142-1265
	CL3	1259-1571	1266-1367
CHAROLAIS	CL1	1000-1147	1000-1130
	CL2	1148-1229	1131-1239
	CL3	1230-1283	1240-1321
	CL4	1284-1340	1322-1398
	CL5	1341-1596	1399-1575
HEREFORD	CL1	1150-1250	1000-1227
	CL2	1251-1299	1288-1339
	CL3	1300-1550	1340-1600
LIMOUSIN	CL1	1081-1229	1000-1220
	CL2	1230-1305	1221-1305
	CL3	1306-1459	1306-1450
MAINE- ANJOU	CL1	1000-1189	1000-1175
	CL2	1190-1290	1176-1289
	CL3	1291-1625	1290-1578
POLLED - HEREFORD	CL1	1126-1239	1000-1238
	CL2	1240-1333	1239-1330
	CL3	1334-1530	1331-1559
SHORTHORN	CL1	1000-1180	1000-1169
	CL2	1181-1275	1170-1275
	CL3	1276-1523	1276-1462



HOUSTON - SWINE

		2023	2024
DIVISION	CLASS	WEIGHTS	
BERKSHIRE	CL1	250-250	250-250
	CL2	251-263	251-262
	CL3	264-282	263-278
	CL4	283-300	279-300
CHESTER / WHITE / OPB	CL1	250-255	250-255
	CL2	256-273	256-273
	CL3	274-300	274-300
DUROC	CL1	250-252	250-254
	CL2	253-263	255-263
	CL3	264-270	264-270
	CL4	271-277	271-277
	CL5	278-285	278-284
	CL6	286-295	285-295
	CL7	296-300	296-300
	CL8	296-300	296-300
SPOTS	CL1	250-250	250-250
	CL2	251-265	251-263
	CL3	266-284	264-279
	CL4	285-300	280-300
POLAND	CL1	250-263	250-262
	CL2	264-300	263-300
OTHER X (Wave 1)	CL1	250-254	250-253
	CL2	250-254	250-253
	CL3	250-254	250-253
	CL4	250-254	250-253
	CL5	250-254	254-258
	CL6	255-258	259-262
	CL7	259-263	263-266
	CL8	264-266	267-270
	CL9	267-269	271-274
	CL10	270-274	275-278
	CL11	275-277	279-285
	CL12	278-280	286-289
	CL13	281-287	290-295
	CL14	288-296	296-300
	CL15	297-300	296-300



HOUSTON - SWINE (Cont.)

		2023	2024
DIVISION	CLASS	WEIGHTS	
OTHER X (Wave 2)	CL1	250-250	250-250
	CL2	250-250	250-250
	CL3	250-250	250-250
	CL4	250-250	251-255
	CL5	251-255	256-260
	CL6	256-261	261-264
	CL7	262-265	265-268
	CL8	266-270	269-271
	CL9	271-274	272-274
	CL10	275-279	275-277
	CL11	280-284	278-282
	CL12	285-289	283-287
	CL13	290-299	288-297
	CL14	300-300	298-300
HAMPSHIRE	CL1	250-253	250-251
	CL2	250-253	250-251
	CL3	250-253	250-251
	CL4	254-259	252-259
	CL5	260-265	260-267
	CL6	266-272	268-272
	CL7	273-277	273-279
	CL8	278-283	280-287
	CL9	284-290	288-296
	CL10	291-300	297-300
YORKSHIRE	CL1	250-250	250-250
	CL2	251-268	251-265
	CL3	269-280	266-279
	CL4	281-288	280-299
	CL5	289-300	300-300



NOTES

			DATE / WEIGHT			
EXHIBITOR	BREED	TAG #				



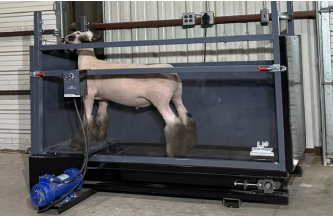
HOUSTON - SHEEP

		2023	2024
DIVISION	CLASS	WEIGHTS	
FW	CL1	100-131	116-131
	CL2	132-147	132-144
	CL3	148-183	145-171
FW X	CL1	102-139	121-139
	CL2	140-152	140-151
	CL3	153-204	152-174
SOUTH DOWN	CL1	95-123	98-122
	CL2	124-134	123-133
	CL3	135-170	134-170
DORPER	CL1	90-109	90-109
	CL2	110-124	110-123
	CL3	126-175	124-159
MW	CL1	100-132	100-132
	CL2	133-140	133-139
	CL3	141-147	140-145
	CL4	148-152	146-150
	CL5	153-157	151-155
	CL6	158-163	156-159
	CL7	164-170	160-164
	CL8	171-180	165-174
	CL9	181-208	175-216

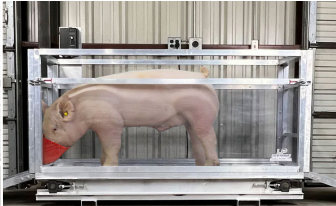


HOUSTON - GOATS

		2023	2024
DIVISION	CLASS	WEIGHTS	
GOATS	CL1	65-74	65-72
	CL2	75-80	73-78
	CL3	81-84	79-83
	CL4	85-87	84-87
	CL5	88-90	88-91
	CL6	91-93	92-94
	CL7	94-96	95-97
	CL8	97-99	98-100
	CL9	100-102	101-104
	CL10	103-105	105-109
	CL11	106-111	110-114
	CL12	112-120	115-120



**LAMB & GOAT
TREADMILL**



**PIG
TREADMILL**



**CATTLE
TREADMILL**



**LAMB, GOAT, HOG
VIBRATION TABLE**



**UNDERWATER
TREADMILL**



**ALUMINUM
TREADMILL**

Morgan
Livestock
Equipment

**LIVESTOCK
PERFORMANCE
PRODUCTS**

800-720-6018

www.morganlivestockequipment.com



HL Horn Livestock

Junior Market
& Breeding Projects

Females & Frozen Genetics

Bulls & Semen Sales

WE DO
IT ALL!
ALL THE
TIME!

VISIT US  3670 FM3326E
Anson, TX 79501

Brandon, Brek, Jagger & Aven Horn • www.hornlivestock.com

Brandon's Cell: 979-885-8188 Brek's Cell: 325-338-5700 Jagger's Cell: 325-669-8188

RODEO



AUSTIN

MARCH 14, 2025 - MARCH 29, 2025



Brady Jensen
Kansas



Steve Sturtz
Texas



Brandon Callis
Oklahoma



Cody Hayes
Louisiana



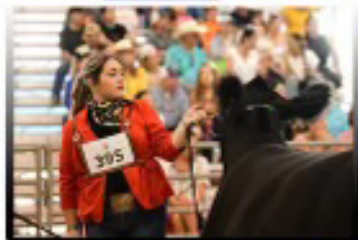
AUSTIN - SWINE

		2023	2024
DIVISION	CLASS	WEIGHTS	
HAMPSHIRE	CL1	250-250	250-250
	CL2	250-250	250-250
	CL3	252-259	253-263
	CL4	260-264	264-270
	CL5	265-274	272-280
	CL6	275-284	282-293
	CL7	290-290	294-300
YORKSHIRE	CL1	250-250	250-262
	CL2	254-267	263-283
	CL3	270-286	284-300
	CL4	287-290	N/A
LIGHT X	CL1	250-250	250-250
	CL2	253-263	252-263
	CL3	264-270	264-273
	CL4	271-278	274-279
	CL5	279-288	280-291
	CL6	289-290	293-300
DARK X	CL1	250-250	250-250
	CL2	250-250	250-250
	CL3	252-257	250-250
	CL4	258-262	252-259
	CL5	263-269	260-265
	CL6	270-274	266-271
	CL7	275-276	272-278
	CL8	277-282	279-282
	CL9	283-288	283-290
	CL10	289-290	291-297
	CL11	289-290	300-300
DUROC	CL1	250-262	250-260
	CL2	263-273	261-273
	CL3	274-286	275-289
	CL4	290-290	290-300
WHITE OPB	CL1	250-272	250-273
	CL2	273-290	276-300
DARK OPB	CL1	250-250	250-250
	CL2	252-265	250-250
	CL3	266-280	253-269
	CL4	281-290	270-280
	CL5	N/A	281-300



LIVESTOCK SHOW AND Rodeo

Mercedes, Texas
March 6-16, 2025



For more information
www.rgvl.com
956.565.2456

Jr. Breeding Shows & Other Contests Open Statewide

Jr. Breeding Cattle

AOB Red Brangus
ARB Santa Gertrudis
Beefmaster Simbrah
Brahman
Mini Hereford

Other Jr. Divisions

Breeding Gilts
Breeding Meat Goats
- Registered & Commercial,
Breeding Dairy Goats
Breeding Sheep

Other Youth Contests:

Ag Product Identification
Beef Skillathon
Consumer Decision Making
Prepared Public Speaking

Swine Skillathon
Livestock Judging
Youth Archery
Youth Horse Show - Performance
Youth Horse Show - Speed Events

Junior Breeding Divisions and Other Youth Contests are open to all Texas FFA members offering awards, premiums and scholarships





MARCH 6, 2025 - MARCH 16, 2025



Mark Hoge
Illinois



Todd Wise
Colorado



Cody Sloan
Missouri



Justin Rodibaugh
Indiana



RIO GRANDE VALLEY - STEERS

		2023	2024
DIVISION	CLASS	WEIGHTS	
SANTA GERTRUDIS	CL1	1055-1180	1116-1252
	CL2	1210-1278	1270-1290
	CL3	1340-1585	1319-1599
SIMBRAH	CL1	1050-1285	1065-1280
	CL2	1330-1640	1290-1375
	CL3	N/A	1400-1575
ABC	CL1	1050-1213	1050-1180
	CL2	1240-1363	1190-1321
	CL3	1385-1630	1340-1525
CHAROLAIS	CL1	1050-1230	1050-1194
	CL2	1235-1299	1219-1294
	CL3	1325-1540	1309-1665
CHIANINA	CL1	1138-1240	1085-1218
	CL2	1250-1340	1235-1311
	CL3	1362-1520	1327-1459
MAINE - ANJOU	CL1	1090-1210	1125-1212
	CL2	1240-1499	1225-1320
	CL3	N/A	1349-1507
AOB	CL1	1050-1145	1050-1080
	CL2	1170-1250	1125-1277
	CL3	1267-1389	1325-1390
	CL4	1395-1495	1400-1632
COMMERCIAL HEIFERS ABC	CL1	495-720	528-615
	CL2	778-794	685-760
	CL3	824-868	804-874
	CL4	896-952	897-955
	CL5	960-1010	970-1020
	CL6	1035-1065	1030-1091
	CL7	1100-1180	1120-1224
	CL8	1220-1350	1268-1348
	CL9	1415-1570	1400-1769
COMMERCIAL HEIFERS AOB	CL1	479-692	437-666
	CL2	706-772	673-725
	CL3	800-886	757-806
	CL4	898-922	904-950
	CL5	940-970	960-995
	CL6	980-1010	1003-1071
	CL7	1040-1089	1114-1185
	CL8	1120-1180	1215-1290
	CL9	1230-1325	1310-1400
	CL10	1440-1565	N/A



RIO GRANDE VALLEY - SWINE

		2023	2024
DIVISION	CLASS	WEIGHTS	
HAMPSHIRE	CL1	240-242	240-250
	CL2	243-255	252-261
	CL3	256-274	264-274
	CL4	275-290	277-290
YORKSHIRE	CL1	240-253	240-255
	CL2	256-270	260-270
	CL3	275-290	275-290
DARK OPB	CL1	240-244	240-249
	CL2	245-260	250-261
	CL3	264-277	264-276
	CL4	280-290	279-290
LIGHT OPB	CL1	240-265	240-266
	CL2	268-290	274-290
DUROC	CL1	240-253	240-251
	CL2	256-269	254-268
	CL3	270-278	269-279
	CL4	280-290	280-290
DARK X	CL1	240-241	240-240
	CL2	242-255	241-255
	CL3	257-265	257-265
	CL4	267-279	268-279
	CL5	283-290	280-290
OTHER X	CL1	240-240	240-243
	CL2	241-252	245-261
	CL3	254-263	264-277
	CL4	264-277	279-290
	CL5	278-290	N/A



NOTES

			DATE / WEIGHT			
EXHIBITOR	BREED	TAG #				



Crucial for maintaining the quality and accessibility of feed, ensuring that it remains clean, dry, and protected from pests. We can Customize these feed lockers to fit the solution your student need!

Morgan
Livestock
Equipment

**SCHOOL FARM
FEED & SUPPLY
LOCKERS**

800-720-6018

www.morganlivestockequipment.com



- Since 1974

1.888.390.4332

Seitzfundraising.com



**FULL
STEAM
AHEAD»»»»»»»»
TO THE NEXT
VICTORY**

**PRIVATE TREATY
SALES**

- » FALL BORN STEERS
PHONE BID OFF
OPENS JAN 27TH
- » BULLS & OPEN
FEMALES YEAR-
ROUND

**SC ONLINE
SALES**

- » EVERY SPRING
MARCH - APRIL

**ANNUAL BRED
HEIFER SALE**

- » 1ST WEEK OF JUNE

**NEW TO
THE BIZ
OR
SHOW RING**

WE CAN HELP WITH:
» PROJECT MANAGEMENT
» FEEDING & MAINTENANCE
» GROUP AND INDIV.
SHOWMANSHIP
LESSONS & CONSULTATIONS
IN-PERSON OR VIRTUAL
EVEN IF YOU DIDN'T
BUY FROM US!

SHACKELFORD

— SHOW CATTLE —

**WADE & CATHERINE
1404 BOUNDS ROAD
GUNTER, TX 75058
972-679-4749**

WADESHACK@GMAIL.COM

**TAYLOR
STILLWATER, OK
903-327-5759**



Creative Awards

www.CreativeAward.com • (830) 997-9179

702 W. Main St. Fredericksburg, TX 78624

